



Bluebeam Revu® PDF Basics

Introduction Class Dates

Bluebeam Revu is the most prevalent construction PDF viewing document program in industry.

We provide a 2 hour introductory session in using Bluebeam Revu as a construction document tool.

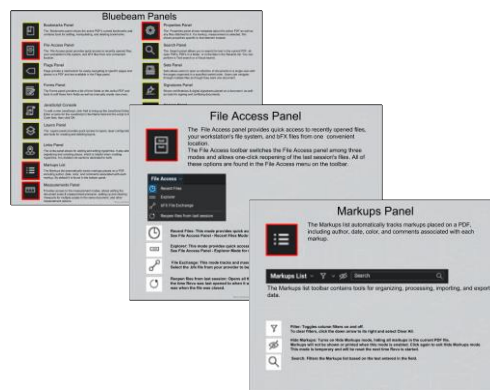
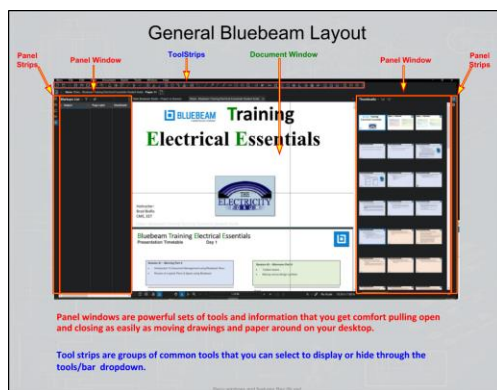
We cover off the following important topics:

- How Bluebeam helps you do YOUR job
- How to get set up on Bluebeam's free studio cloud solution
- Use of shortcuts and tips using Bluebeam's tool strips and tool panels
- Demonstrate using Bluebeam so everyone is simultaneously sharing the same drawings in real time (Bluebeam Studio Session)

If your company uses both blueprints and computers, it is in your best interest to have this critical industry skill set.

After we present an introduction in the use of Bluebeam, we then show some example videos of leading-edge technologies such as BIM and augmented reality.

After we have provided this preliminary training, we wrap up our session with an introduction discussion of our two-day Bluebeam Essentials course.



Bluebeam Revu is used by 99% of top US contractors and 92% of top design-build firms*

* Top 50 firms by revenue, as reported by Engineering News-Record



Bluebeam Revu[®] PDF Basics Introduction Class Dates

Registration Date:

August 6 th	<input type="checkbox"/>	September 3 rd	<input type="checkbox"/>	October 1 st	<input type="checkbox"/>	November 5 th	<input type="checkbox"/>
August 20 th	<input type="checkbox"/>	September 17 th	<input type="checkbox"/>	October 15 th	<input type="checkbox"/>	November 19 th	<input type="checkbox"/>

Student Info

First Name:

Last Name:

E-Mail:

Company:

Are others in your company also attending this Intro? **

Yes	<input type="checkbox"/>
No	<input type="checkbox"/>

** for 5 or more from the same organization, we can schedule a private presentation for just your organization

Please forward your registration form to:
brad@electricityforum.com

Bluebeam Install Info

Have you installed Bluebeam yet?

Yes	<input type="checkbox"/>
No	<input type="checkbox"/>

If not, here's the link for the free 30 day trial:
<https://www.bluebeam.com/trials/>

Can you use two monitors for this introduction?

Yes	<input type="checkbox"/>
No	<input type="checkbox"/>

Would you like help setting up two monitors ahead of the demo?

Yes	<input type="checkbox"/>
No	<input type="checkbox"/>

Bluebeam Revu is used by 99% of top US contractors
and 92% of top design-build firms*

* Top 50 firms by revenue, as reported by Engineering News-Record